

Pilot

Special Needs Booster

User Guide



PLEASE READ THESE INSTRUCTIONS

**For children whose height is between 38" and 63"
and whose weight is between 30 lbs and 120 lbs.**



April 2010

Contents

Diagrams	3-6
Section 1 Warnings	7-9
Section 2 Safety Information	10-12
Section 3 Assembly and Adjustments	13
Section 4 Special needs components	14

Booster Seat Use

Section 5 ISOFAST Installation	15
Section 6 Booster Seat Positioning	15-16
Section 7 Adjusting Recline Angle	16
Section 8 Securing the Child	16-17
Section 9 Seat Belt Buckle Position	17
Section 10 Care and Maintenance	17-18
Section 11 Warranty information	18-19

Product: Pilot Special Needs Booster

Model: 15501

Dist.by: Snug Seat, Inc.

12801 E. Independence Blvd.
Stallings, NC 28105

Customer Service:

Tel: 800-336-7984

Email: sales@snugseat.com

Mfg.by: Sunshine Kids Juvenile Products

3104 142nd Ave E

Sumner, WA 98390

USA

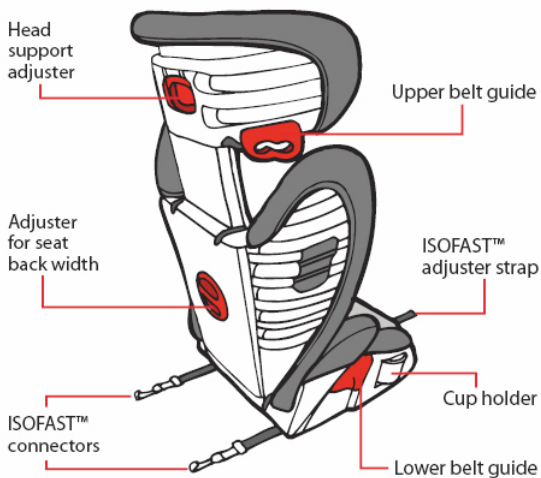
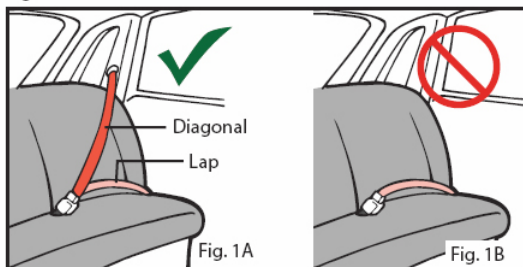


Fig. 1



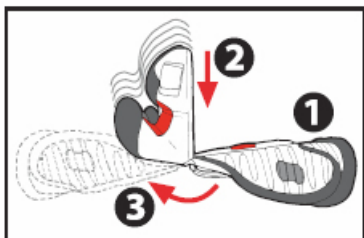


Fig. 2

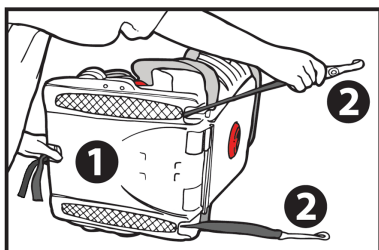


Fig. 3



Fig. 4



Fig. 5

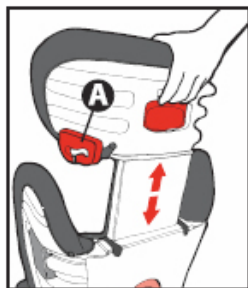


Fig. 6

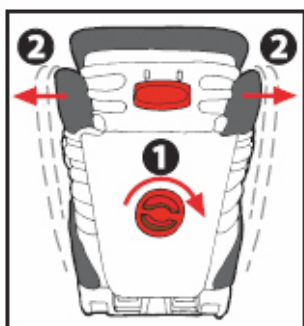


Fig. 7



Fig. 8

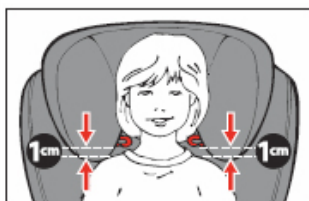


Fig. 9



Fig. 10



Fig 11



Fig 12



Fig 13



Fig 14



Fig 15



Fig 16

Section 1: Warnings



WARNING!

DEATH or SERIOUS INJURY can occur



- Failure to follow all written instructions and product labels can result in death or serious injury in a crash. Carefully read and understand this instruction manual prior to using this restraint. If you have any questions visit skjp.com or contact Sunshine Kids Juvenile products. To insure proper long-term use, store this manual under the bottom of the base.

- Use only with children whose height is between 38" and 63" and whose weight is between 30 lbs and 120 lbs (approx. age 3 to 12 years).

- Only use this restraint forward-facing

- Use only the vehicle's lap and shoulder belt system when restraining the child in this booster seat. (Fig 1A)

- NEVER use with only a vehicle lap belt to restrain a child. (Fig 1 B). This could result in serious injury or death to a child.

- NEVER use the positioning vest only without the vehicle's lap and shoulder belt system to restrain a child. This could result in serious injury or death to a child.

- Some vehicle seat belt systems cannot be used with this booster seat. Read vehicle owner's manual and 'Vehicle Seat Belt Systems' section of this manual.

- DO NOT use this booster seat without the backrest.

- DO NOT use this booster seat with any other backrest or cushions.

- To prevent injury due to product deterioration, do not use this booster seat if it has been involved in a severe accident or if it is older than six years.

- Never leave a child alone in a vehicle, even for a short time.

Section 1: Warnings (continued)



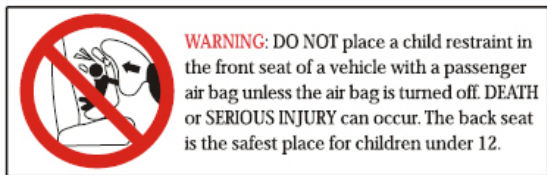
- Always secure this booster seat using vehicle seat belt or LATCH anchors even when not occupied. In a crash, an unsecured item may cause injury to other vehicle occupants.
- Except as described in this manual, do not disassemble or modify any part of this booster seat or vehicle seat belt.
- Register your child restraint with the manufacturer.
- Do not place anything under the booster seat to raise it off the vehicle seat.
- This restraint is not a toy. Do not let a child play with it.
- Do not leave folding vehicle seats unlatched. In the event of a sudden stop, a loose seat back could prevent the booster seat from protecting the child as well as it should.
- In the event of an accident, the vehicle body itself provides the most significant passenger protection. While a properly installed restraint will improve chances for survival in most accidents, a booster seat will not protect a child if the vehicle is too severely impacted.

Follow all instructions on this child restraint and in the written instructions. To ensure proper long term use, store this manual under the bottom of the base.

Section 1: Warnings (continued)



- According to accident statistics, the National Highway Transportation Safety Administration (NHTSA) recommends that parents select the rear seat as the safest location to properly install a booster seat. Please read carefully the section concerning vehicle seat belts in this guide to insure the child's safety. If in doubt about installing this booster seat, please consult the vehicle owner's manual



IMPORTANT: Children who weigh 40 lbs (18kg) or less are best protected in a 5-point harness restraint. Sunshine Kids recommends that children remain in a 5-point harness restraint up to the maximum weight or height allowed.

- If the child will not keep the vehicle shoulder belt properly positioned at all times, DO NOT use a booster seat. You must use a harnessed child restraint.

- **Maximum Child Height:** Child is too tall if the top of the ears are above the top of either the fully raised booster seat headrest or fully raised vehicle headrest.

Section 2: Safety Information

General:

Cover this booster seat if vehicle is left in direct sunlight. Portions of the booster seat can become hot enough to burn a child and cover fabric can become faded.

Store this booster seat in a safe place when not in use. Do not store near direct heat source or place heavy objects on top of it.

Always make sure vehicle seat is locked in its upright position. Reclining the vehicle seat will adversely affect the safety and performance of the child seat in an accident.

Certification:

This child restraint system conforms to all applicable Federal Motor Vehicle Safety Standards. **This restraint is not certified for use in aircraft.** Lap belts in aircraft cannot be used safely with this booster seat.

Registration:

Visit www.skjp.com to register your restraint online. Child restraints can be recalled for safety reasons. You must register this restraint to be reached in a recall. Send your name, address and this restraint's model number and manufacturing date to Sunshine Kids Juvenile Products, 3104 142nd Ave. South, suite 105, Sumner, WA 98390, or call 1-888-336-7909. For recall information call the U.S. Government's Auto Safety Hotline at 1-888-424-9393 (TTY 1-800-424-9153) or go to www.nhtsa.gov

Section 2: Safety Information (continued)

Vehicle Seat Belt Systems:

IMPORTANT: Some vehicles have no seating positions compatible with booster seats. If in doubt, please contact the vehicle manufacturer for assistance.

WARNING: ONLY use this booster seat with a 3-point (lap-and-shoulder) vehicle seat belt that is **NOT** motorized or anchored to the vehicle door.

In order to protect a child in an accident, this booster must be used with a compatible vehicle seat belt.

The following seat belt types are **NOT** compatible with this booster seat:

- Two-point seatbelts of any kind.
- Three-point seat belts with separate retractors for lap and shoulder sections.
- Motor-driven, automatic seat belts.
- Seat belts with anchorage points on the door.



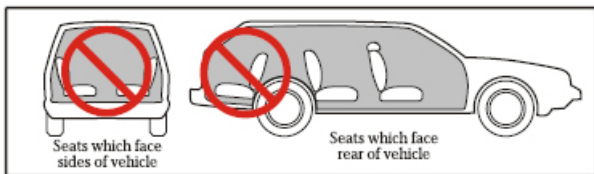
The vehicle owner's manual will have complete information on the types of seat belts in the vehicle. If the seat belt type is listed above, choose another seating position in the vehicle.

Section 2: Safety Information (continued)

Vehicle Seating Positions

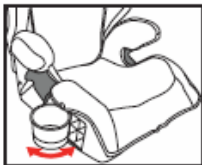
Sunshine Kids and the U.S. Department of Transportation warn that children under 12 must ride in the rear seats and away from front airbags. The only exception is if the airbag is turned off. When using a vehicle with airbags, refer to the vehicle owner's manual for additional booster seat installation instructions and precautions.

WARNING: Only use this booster seat in forward-facing vehicle seats. **DO NOT** use this booster seat in side-facing or rear-facing seats in vans or station wagons.



Cup Holders:

Cup holders are located on both sides of seat bottom: swivel outward to the locked position for use. Swivel inward to the recessed and locked position when not in use.



Important: **DO NOT** step on or put excess weight on cup holder which could cause it to break.

Caution: **DO NOT** use with hot liquids as this could burn a child

Section 3: Assembly and Adjustments

Attaching the Backrest

- 1) Lay backrest on flat surface with front facing down. (Fig 2.1)
- 2) Slide seat bottom at 90° angle onto backrest hooks (Fig 2.2)
- 3) Rotate seat bottom downwards and under back rest until a 'click' is heard and the seat shape is formed. (Fig 2.3)

Removing backrest: follow above instructions in reverse.

Adjusting Headrest:

Squeeze the red adjuster on back of booster seat head rest while adjusting its height up or down to fit the child. (Fig 6)

Adjusting Backrest width:

This Booster seat features a unique, width-adjusting seat back to best fit a growing child as well as seasonal clothing. Turn the dial on the back of the backrest (Fig 7) to adjust its width: turn clockwise (Fig 7.1) to increase backrest width (Fig 7.2), turn counter-clockwise to make backrest narrower.

Suggestion: It may be easier to adjust backrest to proper width prior to securing the booster seat installation using ISOFIX.

Section 4: Special Needs Components

This product includes several positioning components appropriate for children with special needs.

Installing Positioning Vest:



WARNING: The positioning vest is **NOT** a safety harness and is **NOT** a safety restraint for a child. A child using this booster seat **MUST** be properly restrained by the vehicle seat belt as per this instruction manual.

Section 4: Special Needs Components (continued)

- 1) The vest straps are attached to the tri-glide adjusters located at the bottom of the height adjustable headrest (Fig. 11). Adjust to desired length. (The length will change as you adjust the headrest upward). Proper height adjustment will place the lower straps across the child's pelvis.
- 2) Wrap the strap on the bottom of the vest around the back of the booster (Fig. 12) and adjust to length. Keep the positioning vest centered and snug enough to allow adjustment with the adjusting strap located on the front of the positioning vest.

Installing Lateral Supports:

Attach lateral supports to the strip of hook and loop running vertically on each side of the back rest under the center panel (Fig. 13) at the appropriate height for the child.

Installing Seat Extension:

- 1) Turn seat upside down and loosen front edge of upholstery by releasing elastic connectors (Fig. 14).
- 2) Turn seat back upright and install seat extension by using the hook and loop connectors on the front edge of the seat shell and the straps on the seat shell extension as seen in (Fig. 15).
- 3) Pull seat cover back over the seat extension, tuck the elastic loops underneath the fabric and secure with hook and loop connectors provided.

Installing Pommel:

The pommel may be installed in one of two positions. These positions are primarily associated with the use of the seat extension, but not exclusively.

- 1) With the front edge of the seat cover loose, insert the tabbed sections of the hook and loop on the bottom of the pommel into the appropriate slot (long or short seat depth) and attach to the sewn hook and loop panels on the underside of the cover (Fig. 16)
- 2) Re-attach the seat cover.

Section 5: ISOFAST Installation

To improve safety and performance, this booster seat is equipped with a unique, one-pull, ISOFAST system that allows easy attachment to a vehicle's lower LATCH anchor locations.

WARNING: Unsecured objects can become flying hazards and can cause serious injury in an accident. Sunshine Kids always recommends utilizing ISOFAST installation in vehicles equipped with lower anchors.

- 1) Disengage ISOFAST anchors from storage position
- 2) Lay booster seat on its side.
- 3) While depressing the cam lock lever (Fig 3.1), pull ISOFAST connectors away from the booster seat and extend both straps all the way. (Fig 3.2)
- 4) Connect both ISOFAST connectors to vehicle anchors for that seating position (Fig 4.1) starting with the connector that is farthest from you. For ease of use, make sure open end hooks face upwards during use.
- 5) While pushing booster against vehicle seat (Fig 4.3), pull one adjuster strap tight (Fig 4.2) and then the other.

NOTE: Even with ISOFAST properly attached and adjusted, child seat will still have some movement against the vehicle seat back and bottom.

Disengaging ISOFAST installation:

Follow above instructions in reverse:

- 1) Depress the cam lock lever while pulling child seat away from the vehicle seat back until the ISOFAST straps are extended all the way.
- 2) Disconnect ISOFAST connectors from vehicle anchors.
- 3) Pull ISOFAST adjuster straps to recess the ISOFAST connectors into the back of the booster seat bottom for safe storage.

Section 6: Proper Positioning on Vehicle Seat

- 1) Place booster seat on vehicle seat so it is resting firmly on vehicle seat bottom and touching the vehicle seat back. (Fig 5)

IMPORTANT: The booster backrest must be in full contact with the vehicle seat back. (Fig 5) In some cases, you may have to raise the vehicle headrest to properly accommodate the backrest height of the booster seat. It may also

Section 6: Proper Positioning on Vehicle Seat (continued)

be necessary to adjust the recline angle of the booster seat to match that of the vehicle seat: (See section 6)

Section 7: Adjusting the Recline Angle

This booster seat features a recline angle that can adjust to match that of the vehicle seat:

- 1) Push booster seat backrest backwards until you hear a click. Backrest will now pivot freely and does not need to click into another position. (Fig 5)
- 2) Push seat bottom and backrest of booster seat down and back into vehicle seat until there is secure positioning and full contact with the booster seat and vehicle seat bottom and vehicle seat back. (Fig 5)

Section 8: Securing the Child

- 1) Make sure booster seat is properly positioned and installed on vehicle seat as per the instructions in Sections 4 and 5.
- 2) Properly position child: sitting upright and all the way back in the booster seat.
- 3) Make sure booster seat backrest width is adjusted to narrowest width setting that comfortably fits child. (see Section 3)
- 4) Place the positioning vest over child's shoulders and secure locking clip.
- 5) Place lateral supports at desired torso height.
- 6) Feed the diagonal portion of the seatbelt through the red upper belt guide (Fig 6A) on the side opposite the seatbelt buckle. (Fig 8)
- 7) Fasten seatbelt across child: Lap portion of seatbelt should rest within both red lower belt guides. Diagonal shoulder portion should route inside the red lower belt guide closest to the buckle and over child's shoulder. (Fig 8)
- 8) Adjust headrest (section 3) to proper height: Upper shoulder guide should be slightly above (at least 1 cm/.4") the child's shoulders. (FIG 9)

WARNING: If headrest is adjusted to maximum height and child's shoulder height is closer than 1 cm to the upper belt guide, child is too tall.

Section 8: Securing the Child (continued)

9) Make sure seat belt is not twisted and lays flat across child's lap, torso and shoulder. (Fig 8)

10) Tighten the seatbelt by pulling the diagonal shoulder belt portion in the direction of the arrows in Fig 8.

11) Confirm seatbelt buckle is in correct position. (see section 8)

WARNING: If lap portion and diagonal portion of seatbelt are not positioned correctly, the booster seat is not properly installed:

Diagonal portion of seatbelt should lay over the shoulder and NOT touching the neck. (Fig 8)

Lap belt position should be forward and as low as possible over child's pelvis and contacting the upper thigh.

Section 9: Proper buckle position

IMPORTANT: After booster seat is installed and seatbelt is fastened around child, it is important to confirm correct seatbelt buckle position to ensure secure installation.

Correct seatbelt buckle position (Fig 8): Buckle is on the outside of lower belt guide.

Incorrect seat belt buckle position (Fig 10): If buckle is being pulled across the lower belt guide and into the seat, choose another seating position within the vehicle.

Section 10: Care and maintenance

Cleaning the cover:

Read all labels attached to cover for washing instructions.

Hand wash cover cold water with mild detergent only.

Line dry to prevent shrinkage.

Do NOT wash cover in hot water.

Do NOT bleach, machine wash or machine dry.

Cleaning the shell:

Sponge clean ONLY using warm water and mild soap. Towel dry when finished. DO NOT use solvents, detergents or any other chemical or cleaning agent. Do NOT lubricate any part of the seat.

Section 10: Care and Maintenance (continued)

Removing the fabric cover:

- 1) Separate seat back section from seat bottom section.
- 2) Remove plastic fasteners and elastics that secure fabric cover to seat bottom, seat back and head rest.
- 3) Remove fabric cover pieces from the booster seat sections.

Attaching the cover:

Follow the above instructions in reverse

Section 11: Warranty Information

This child booster seat was manufactured by Sunshine Kids Juvenile Products ("Sunshine Kids"). Sunshine Kids warrants this product to the original retail purchaser as follows.

Limited one-year warranty:

This product is warranted solely to the retail customer who purchased the product against defective materials or workmanship for one year from original date of retail purchase. Proof of purchase is required. The exclusive remedy for this warranty is that Sunshine Kids will, at its option, replace, repair or provide replacement components for this product or may refund the original purchase

price of this product. Sunshine Kids reserves the right to change fabrics, parts,

product model or to make substitutions. To initiate a claim under this warranty, please contact Sunshine Kids at 1-888-336-7909 or contact us using the address on the back of this instruction manual.

Please register this product within 30 days of original date of purchase by completing and mailing the registration card.

Warranty Limitations:

This warranty does not include damage arising directly or indirectly from negligence, misuse or unapproved use by the retail customer which are not in

Section 11: Warranty Information (continued)

accordance with instructions contained in the product instruction manual or Federal governmental safety guidelines for the use of such products.

Using any other manufacturers product, or any product not specifically approved by Sunshine Kids Juvenile Products for use with this restraint is not allowed. Use of such products could seriously impair this product's ability to perform properly in an accident and could cause it to fail Federal Motor Vehicle Safety Standards. Any such use will result in the voiding of the warranty provided hereunder.

Limitations of Damages:

The warranty and remedies set forth above are sole and exclusive remedies with respect to the product and in lieu of all others, whether oral or written, expressed, or implied. In no event whatsoever, will Sunshine Kids or a retailer of this product be liable for any damages, including those incidental or consequential, arising out of the use of this product.

Warranty limitations and other warranty terms and conditions:

The express warranty provided hereunder is in lieu of any implied warranties, including implied warranties of merchantability and appropriateness for a particular purpose, and shall be limited to the duration and terms of this express written warranty unless otherwise restricted by applicable state law. This warranty grants you specific legal rights. Neither Sunshine Kids, nor any retailer selling this product, authorizes any other person or party to create for it any other warranty, obligation, or liability in connection with this product.

Distributed by:



Manufactured by:

